

cedir collection

# MATEERIA

Perfetta fusione

Stampa: Settembre 2011 | design: quattronero.com



# MATERIA

Materia è il risultato tecnologico della fusione fra impasto colorato in massa e parte vetrosa. La struttura compatta e gli eccellenti requisiti tecnici ne fanno un prodotto idoneo alla posa in esterno, a qualsiasi condizione climatica e di sollecitazione all'usura. Materia, ottimo partner per il progettista, nella versione naturale è presentata in quattro formati 20x20 – 20x40 e 30x60 - 60x60. La versione spazzolata, disponibile nei formati 30x60 e 60x60, nasce per chi vuole dare agli ambienti interni una soluzione di continuità cromatica con le aree esterne.

Materia is the technological result of the fusion of a coloured mix in the ceramic mass and a vitreous part. Compact structure and excellent technical properties make it suitable for laying outdoors under any climatic or load-stress conditions. Materia, an optimal partner for the designer, comes in four sizes in the natural version: 20x20 – 20x40 and 30x60 – 60x60. The brushed version – available in 30x60 and 60x60 – has been created for those who wish to achieve chromatic continuity between indoor and outdoor areas.

Materia est le résultat technologique de la fusion entre une pâte colorée dans la masse et une partie vitreuse. La structure compacte et les excellentes qualités techniques font de Materia un produit parfaitement adapté pour la pose à l'extérieur, quelles que soient les conditions climatiques, offrant un maximum de résistance à l'usure. Excellent partenaire du concepteur, Materia existe dans la version brute en quatre formats (20x20 – 20x40 et 30x60 – 60x60). La variante brossée – dans les formats 30x60 et 60x60 – a été conçu pour ceux qui souhaitent donner aux espaces intérieurs une continuité chromatique avec les espaces extérieurs.

Materia ist das technische Ergebnis der Verschmelzung einer Farbmasse mit einem Glasanteil. Durch seine kompakte Struktur und die herausragenden technischen Merkmale ist es ein Produkt, das sich bestens eignet, um in Außenbereichen verlegt zu werden – in jeglichem Klima und bei jeglichem Benutzungsgrad. Materia, der optimale Partner für den Planer, ist in der natürlichen Version in vier Formaten erhältlich: 20x20 – 20x40 und 30x60 – 60x60. Die gebürstete Version – in den Formaten 30x60 und 60x60 – ist für diejenigen gedacht, die Innenbereiche durchgängig wie die Außenbereiche gestalten möchten.

Коллекция Materia – это технологический результат слияния окрашенного по всей массе материала со стекловидной поверхностью. Компактная структура и превосходные технические характеристики благоприятствуют применению данной продукции для наружной отделки независимо от климатических условий и с любой степенью износа. Коллекция Materia, отличный партнёр для проектировщика: в натуральной версии она представлена четырьмя форматами: 20x20 – 20x40 и 30x60 – 60x60. Версия spazzolata (матовая), в форматах 30x60 и 60x60, появляется на свет для тех, кто желает придать внутренним помещениям ощущение хроматической непрерывности с наружной облицовкой.

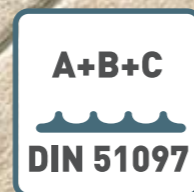




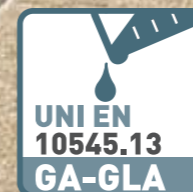
Impasti colorati miscelati  
Coloured body mixtures



▲ Resistenza alla scivolosità  
Non slip grade



▲ Resistenza allo scivolamento su superfici calpestabili in presenza d'acqua a piedi nudi  
Slip resistance on barefoot wet areas



▲ resistenza ai prodotti chimici di uso domestico e additivi per piscina  
resistance to household chemicals and swimming-pool additives  
resistenza all'attacco acido e basico (escluso HF e suoi derivati)  
acid and alkali resistance (excluding HF and its derivatives)



Resistenza al gelo  
Frost resistance



durezza superficiale (MOHS)  
surface hardness (MOHS scale)



Resistenza all'abrasione profonda  
Resistance to deep abrasion



Resistenza alle macchie  
Stain resistance

superficie **naturale**

20x20

**pavimento:**  
materia naturale ambra  
cm 20x20 - 20x40  
elemento elle naturale ambra  
cm 15x30xh5



superficie **naturale**

20x40

# 20x20



**pavimento:**  
materia naturale beige  
cm 20x20 - 20x40



**pavimento:**  
materia naturale ambra  
cm 20x20 - 20x40

# 20x40

superficie **naturale**

20x20

**pavimento:**  
materia naturale grigio  
cm 20x20  
**rivestimento:**  
materia naturale grigio  
cm 30x60



superficie **naturale**

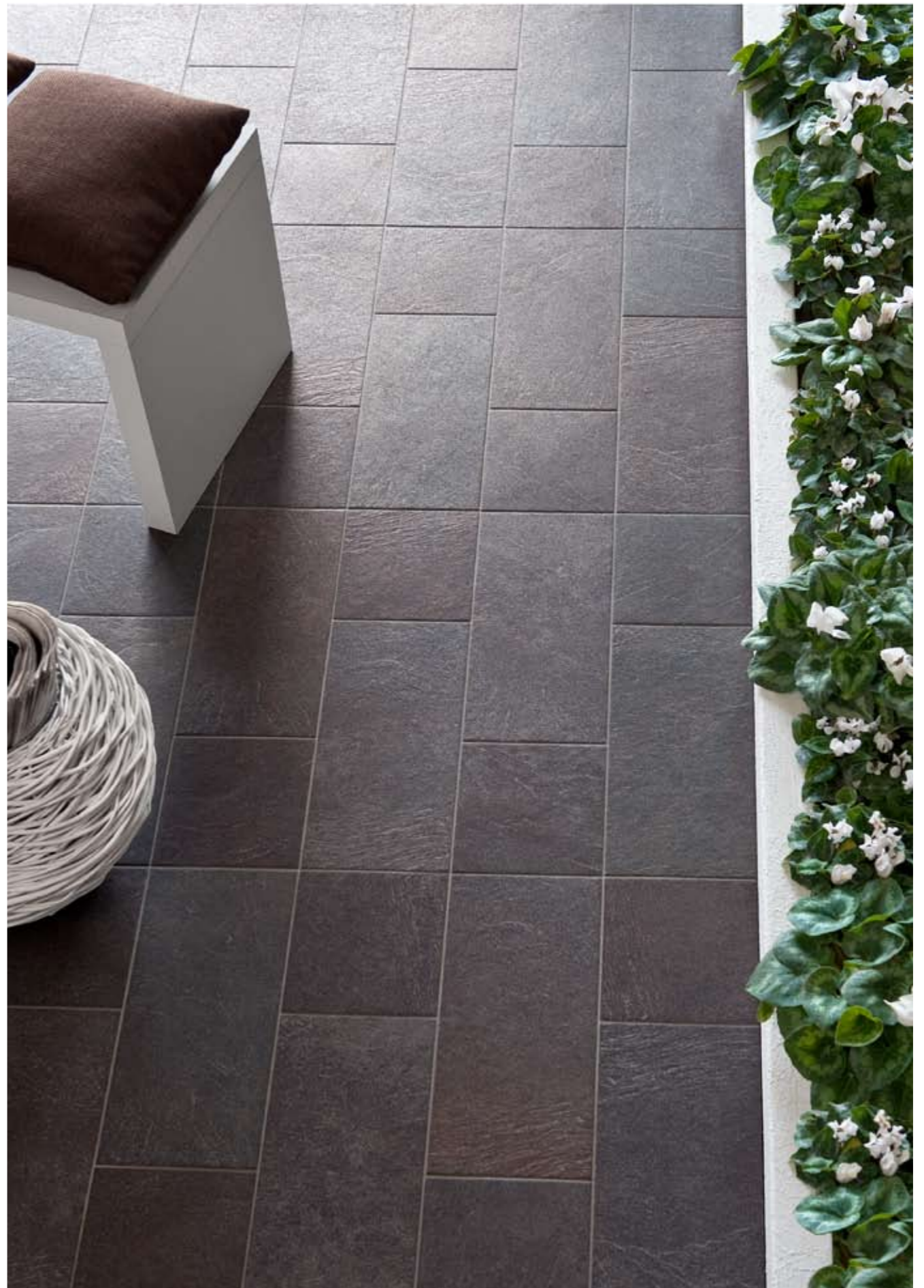
20x40

20x20

superficie naturale



**pavimento:**  
materia naturale grigio  
cm 20x20 - 20x40



**pavimento:**  
materia naturale nero  
cm 20x20 - 20x40

20x40

superficie naturale



Ambra  
**MAT31 22**  
cm 20x20

■ 64-a



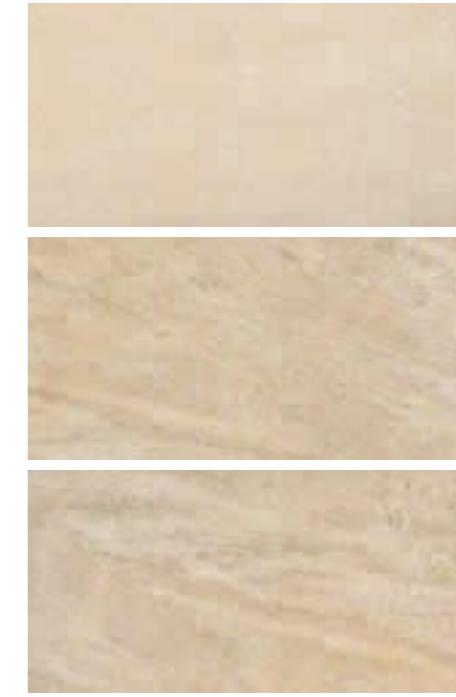
Beige  
**MAT03 22**  
cm 20x20

■ 64-a



Ambra  
**MAT31 40**  
cm 20x40

■ 64-a



Beige  
**MAT03 40**  
cm 20x40

■ 64-a



Grigio  
**MAT06 22**  
cm 20x20

■ 64-a



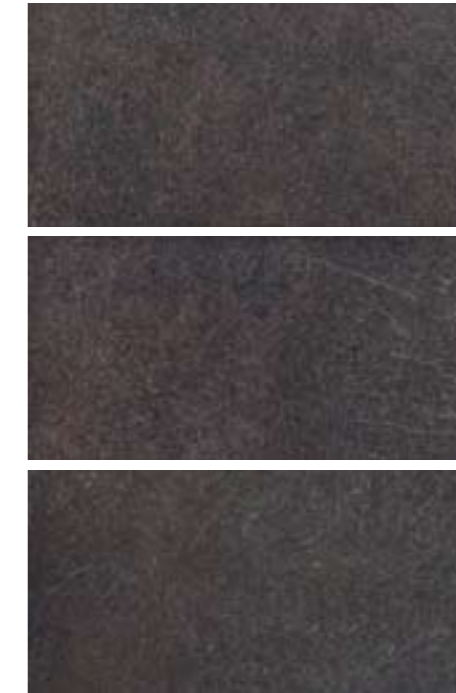
Nero  
**MAT09 22**  
cm 20x20

■ 64-a



Grigio  
**MAT06 40**  
cm 20x40

■ 64-a

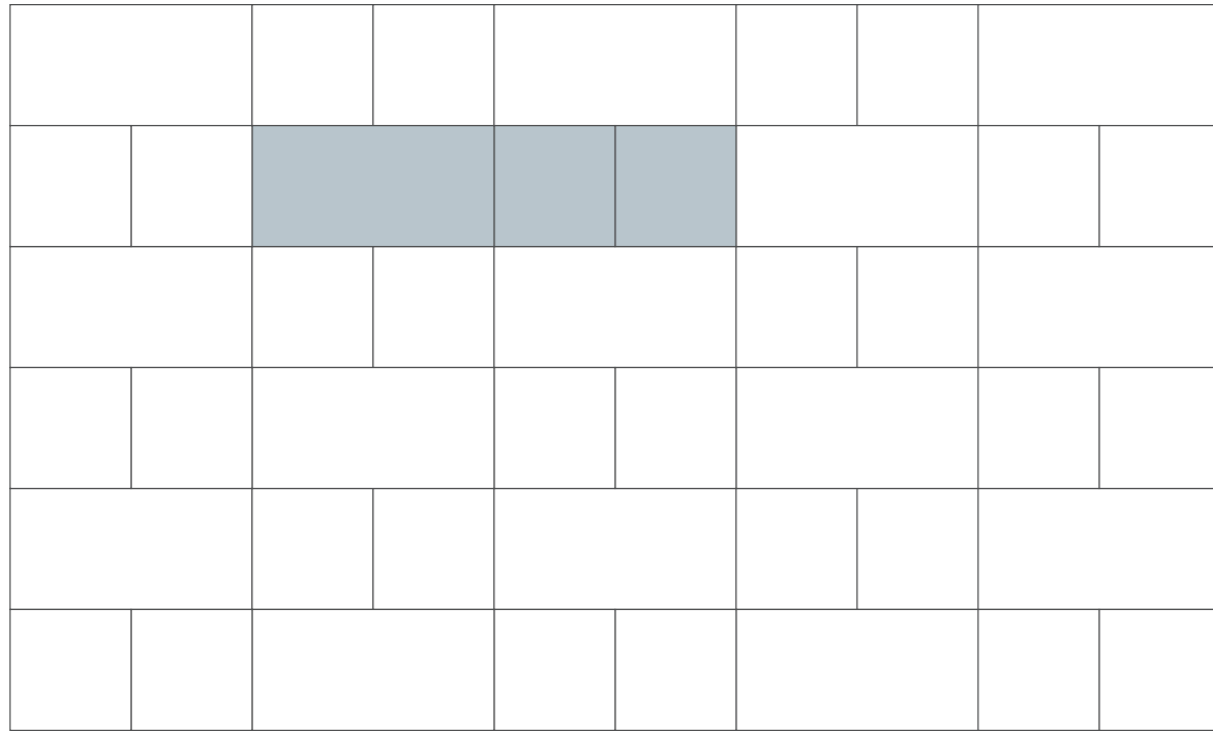


Nero  
**MAT09 40**  
cm 20x40

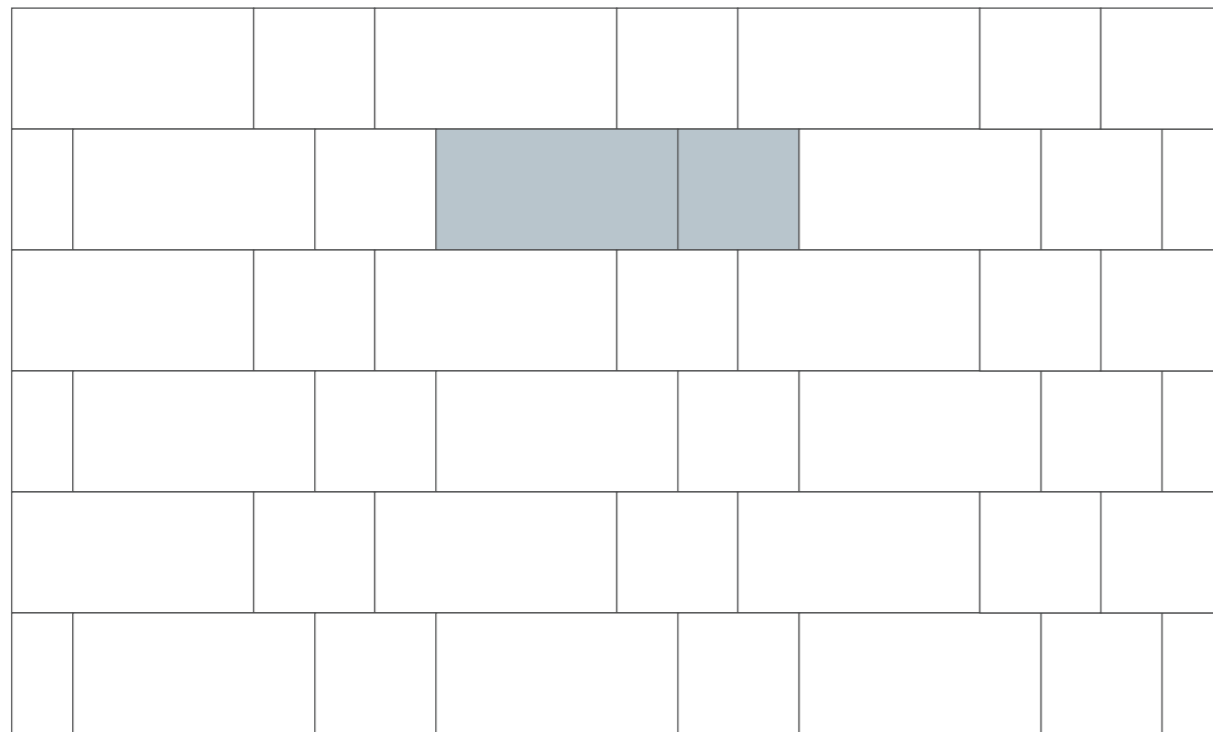
■ 64-a

Le tonalita' dei colori sono indicative  
The colours shades are indicative - Les nuances des couleurs sont indicatives - Die Farbtöne sind annähernd - Тональности цветов ориентировочны

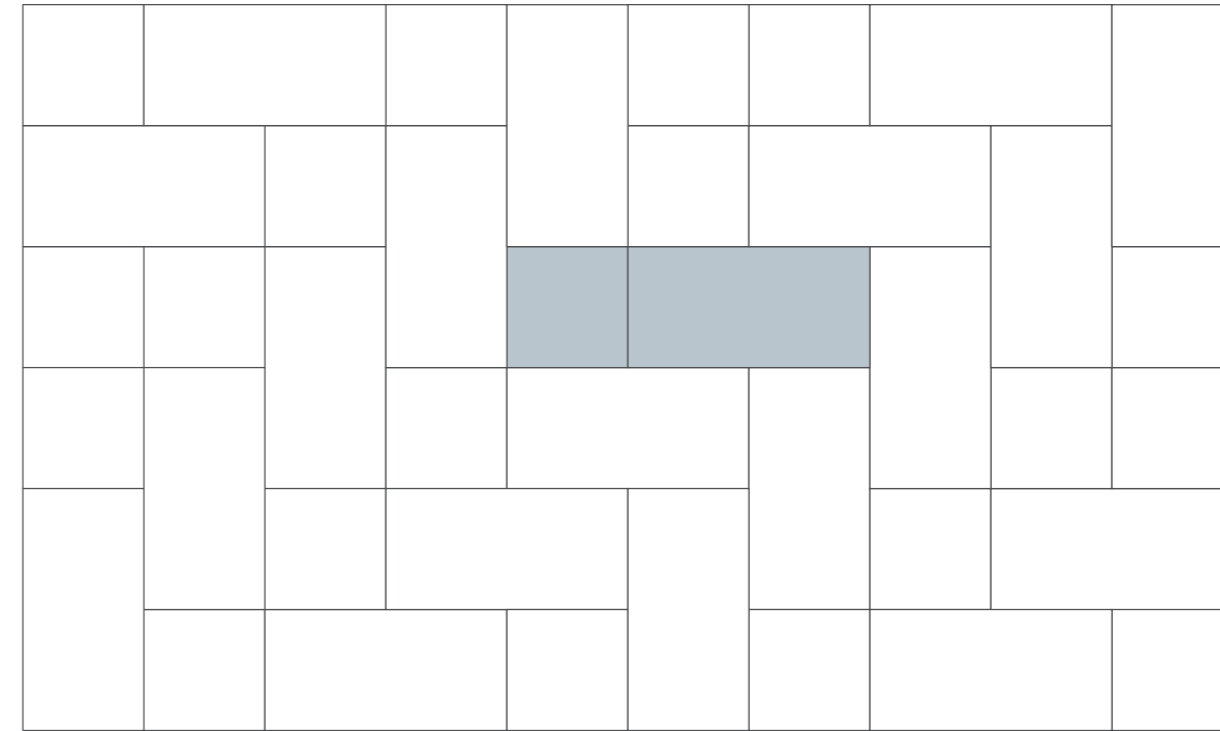




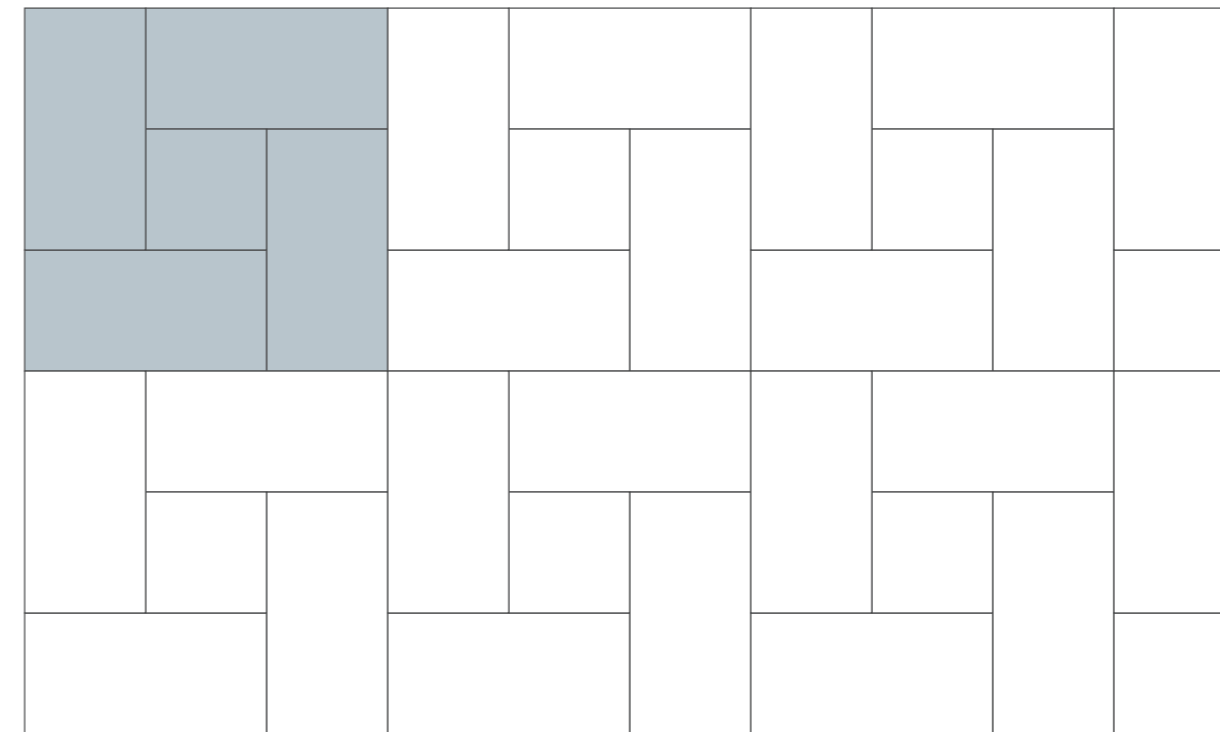
Formato cm	% mq	pezzi/mq	mq
20x20	50,00	12,50	0,5000
20x40	50,00	6,25	0,5000



Formato cm	% mq	pezzi/mq	mq
20x20	33,33	8,33	0,3333
20x40	66,67	8,33	0,6667



Formato cm	% mq	pezzi/mq	mq
20x20	33,33	8,33	0,3333
20x40	66,67	8,33	0,6667



Formato cm	% mq	pezzi/mq	mq
20x20	11,11	2,78	0,1111
20x40	88,89	11,11	0,8889

superficie **spazzolata**

30x60

superficie **naturale**

60x60

superficie naturale

30x60

pavimento:  
materia naturale beige  
cm 30x60



superficie spazzolata

60x60

pavimento:  
materia spazzolato beige  
cm 30x60



Ambra  
**MAT31 36**  
cm 30x60

■ 64-a



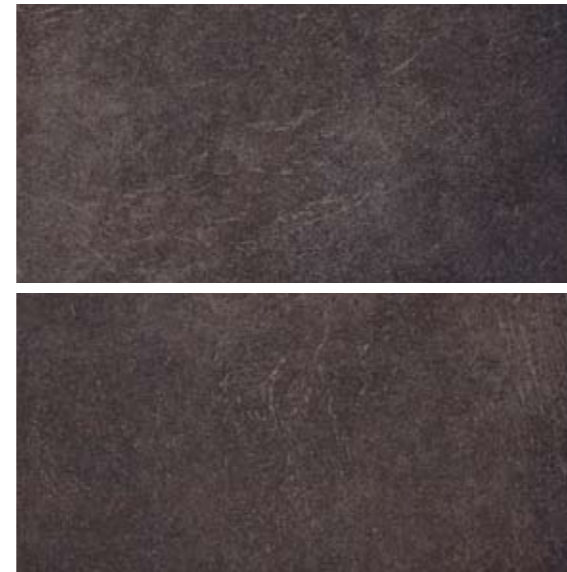
Beige  
**MAT03 36**  
cm 30x60

■ 64-a



Grigio  
**MAT06 36**  
cm 30x60

■ 64-a



Nero  
**MAT09 36**  
cm 30x60

■ 64-a



Ambra  
**MAT31 60**  
cm 60x60

■ 70



Beige  
**MAT03 60**  
cm 60x60

■ 70



Grigio  
**MAT06 60**  
cm 60x60

■ 70



Nero  
**MAT09 60**  
cm 60x60

■ 70

Le tonalita' dei colori sono indicative

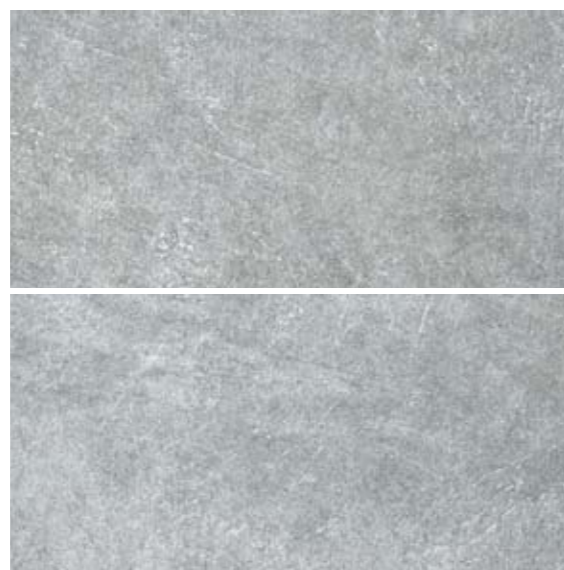
The colours shades are indicative - Les nuances des couleurs sont indicatives - Die Farbtöne sind annähernd - Тональности цветов ориентировочны



Ambra Spazzolato  
**MAS31 36**  
cm 30x60 ■ 71



Beige Spazzolato  
**MAS03 36**  
cm 30x60 ■ 71



Grigio Spazzolato  
**MAS06 36**  
cm 30x60 ■ 71



Nero Spazzolato  
**MAS09 36**  
cm 30x60 ■ 71



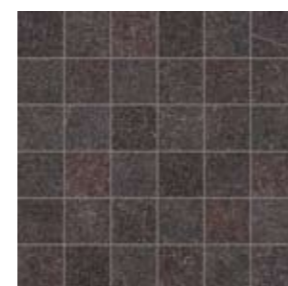
Mosaico Ambra Spazzolato  
**MAS31MOSAICO**  
cm 30x30 ● 34



Mosaico Beige Spazzolato  
**MAS03MOSAICO**  
cm 30x30 ● 34



Mosaico Grigio Spazzolato  
**MAS06MOSAICO**  
cm 30x30 ● 34



Mosaico Nero Spazzolato  
**MAS09MOSAICO**  
cm 30x30 ● 34



Ambra Spazzolato  
**MAS31 60**  
cm 60x60 ■ 72-a



Beige Spazzolato  
**MAS03 60**  
cm 60x60 ■ 72-a



Grigio Spazzolato  
**MAS06 60**  
cm 60x60 ■ 72-a



Nero Spazzolato  
**MAS09 60**  
cm 60x60 ■ 72-a

Le tonalita' dei colori sono indicative  
The colours shades are indicative - Les nuances des couleurs sont indicatives - Die Farbtöne sind annähernd - Тональности цветов ориентировочны



materia naturale grigio cm 30x60



materia naturale ambra cm 30x60

## pezzi speciali

Special pieces · Pièces spéciales · Passende Sonderstücke · СПЕЦИАЛЬНЫЕ ЭЛЕМЕНТЫ

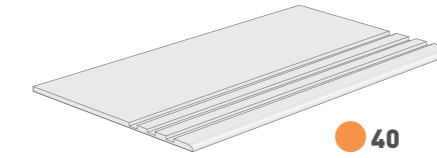


10

Battiscopa Naturale

Ambra	MAT31A BATT40
Beige	MAT03A BATT40
Grigio	MAT06A BATT40
Nero	MAT09A BATT40

cm 9,5x40

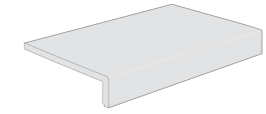


40

\* Gradino Step Naturale

Ambra	MAT31A 36STP
Beige	MAT03A 36STP
Grigio	MAT06A 36STP
Nero	MAT09A 36STP

cm 30x60

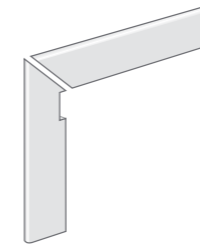


38

\* Elemento Elle Naturale

Ambra	MAT31ELLE 30
Beige	MAT03ELLE 30
Grigio	MAT06ELLE 30
Nero	MAT09ELLE 30

cm 15x30xh5

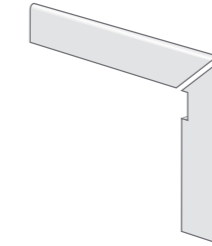


35

\* Scamillo sinistro Naturale

Ambra	MAT31SCAM40SN
Beige	MAT03SCAM40SN
Grigio	MAT06SCAM40SN
Nero	MAT09SCAM40SN

cm 9,5x40 (2 pz)

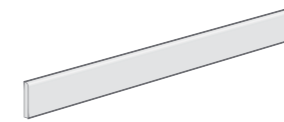


35

\* Scamillo destro Naturale

Ambra	MAT31SCAM40DX
Beige	MAT03SCAM40DX
Grigio	MAT06SCAM40DX
Nero	MAT09SCAM40DX

cm 9,5x40 (2 pz)

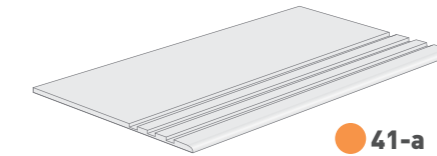


15

Battiscopa Spazzolato

Ambra	MAS31A BATT60
Beige	MAS03A BATT60
Grigio	MAS06A BATT60
Nero	MAS09A BATT60

cm 9,5x60

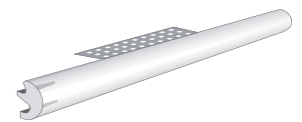


41-a

\* Gradino Step Spazzolato

Ambra	MAS31A 36STP
Beige	MAS03A 36STP
Grigio	MAS06A 36STP
Nero	MAS09A 36STP

cm 30x60

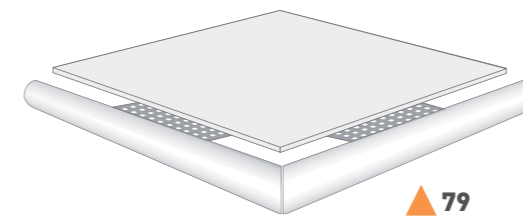


68

\* Torello con griglia spazzolato

Ambra	MAS31TOROGF60
Beige	MAS03TOROGF60
Grigio	MAS06TOROGF60
Nero	MAS09TOROGF60

cm 4x60

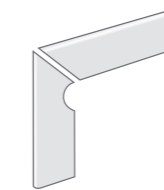


79

\* Angolo Torello con griglia Spazzolato

Ambra	MAS31SNDXGF60
Beige	MAS03SNDXGF60
Grigio	MAS06SNDXGF60
Nero	MAS09SNDXGF60

cm 4x61 (2 pz)

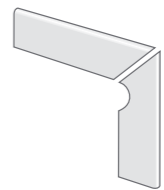


35

\* Scamillo sinistro Spazzolato

Ambra	MAS31SCAM30SN
Beige	MAS03SCAM30SN
Grigio	MAS06SCAM30SN
Nero	MAS09SCAM30SN

cm 9,5x30 (2 pz)



35

\* Scamillo destro Spazzolato

Ambra	MAS31SCAM30DX
Beige	MAS03SCAM30DX
Grigio	MAS06SCAM30DX
Nero	MAS09SCAM30DX

cm 9,5x30 (2 pz)

\* Articoli unicamente a richiesta

Available only by special order • Articles uniquement sur demande • Nur auf Wunsch gefertigten Artikel • ПРОДУКЦИЯ ПРОИЗВОДИТСЯ ТОЛЬКО ПО ЗАКАЗУ

# caratteristiche tecniche

Technical datas - Caractéristiques techniques - Technische Eigenschaften - Технические характеристики

GRES PORCELLANATO COLORATO IN MASSA DECORATO - ISO 13006 UNI EN 14411 - Appendice G - Bla - GL  
Decorated colored body Porcelain - Grès Cérame coloré pleine masse et décoré - Dekoriertes durchgefärbtes Feinsteinzeug

CARATTERISTICHE TECNICHE TECHNICAL DATAS CARACTÉRISTIQUES TECHNIQUES TECHNISCHE EIGENSCHAFTEN	NORMA STANDARD NORME NORM	VALORE PRESCRITTO UNI EN 14411 - BI α REQUIRED VALUE UNI EN 14411 - BI α VALEUR PRESCRITE UNI EN 14411 - BI α VORGESCHRIEBENER WERT UNI EN 14411 - BI α	MATERIA NATURALE	MATERIA SPAZZOLATO
<b>spessore</b> thickness épaisseur Stärke	<b>10545.2</b>	<b>±5%</b>	<b>10,5mm ±5%</b>	<b>10,5mm ±5%</b>
<b>assorbimento d'acqua</b> water absorption absorption d'eau Wasseraufnahme	<b>10545.3</b>	<b>≤ 0,5%</b>	<b>≤ 0,15%</b>	<b>≤ 0,15 %</b>
<b>resistenza alla flessione</b> bending strength résistance à la flexion Biegefestigkeit	<b>10545.4</b>	<b>≥ 35 N/mm<sup>2</sup></b>	<b>≥ 40 N/mm<sup>2</sup></b>	<b>≥ 40 N/mm<sup>2</sup></b>
<b>sforzo di rottura (S)</b> breaking strength (S) chargement de rupture (S) Bruchlast (S)	<b>10545.4</b>	<b>≥ 1300 N</b>	<b>≥ 1600 N</b>	<b>≥ 1600 N</b>
<b>durezza superficiale (MOHS)</b> surface hardness (MOHS scale) dureté superficielle (échelle MOHS) Oberflächenhärte (nach MOHS)	<b>EN 101</b>	<b>≥ 5</b>	<b>8</b>	<b>7</b>
<b>Resistenza all'abrasione profonda</b> resistance to deep abrasion résistance à l'abrasion profonde Tiefenverschleißbeständigkeit	<b>10545.6</b>	<b>≥ 175 mm<sup>3</sup></b>	<b>109 mm<sup>3</sup></b>	<b>109 mm<sup>3</sup></b>
<b>resistenza al gelo</b> frost resistance résistance au gel Frostbeständigkeit	<b>10545.12</b>	<b>Resistente</b> Resistant Résistant Beständig	<b>Resistente</b> Resistant Résistant Beständig	<b>Resistente</b> Resistant Résistant Beständig
<b>resistenza alle macchie</b> stain resistance résistance aux taches Fleckenfestigkeit	<b>10545.14</b>	<b>CLASSE 3 MINIMO</b>	<b>5</b>	<b>5</b>
<b>resistenza ai prodotti chimici di uso domestico e additivi per piscina</b> resistance to household chemicals and swimming-pool additives résistance aux produits chimiques d'usage domestique et additifs pour piscine Beständigkeit gegen Haushaltschemikalien und Badewasserzusätze für Schwimmbäder	<b>10545.13</b>	<b>GB MINIMO</b>	<b>GA</b>	<b>GA</b>
<b>resistenza all'attacco acido e basico (escluso HF e suoi derivati)</b> acid and alkali resistance (excluding HF and its derivatives) résistance aux acides et aux bases (sauf HF et dérivés) Widerstand gegen Säuren und Laugen (mit Ausnahme von HF und deren Verbindungen)	<b>10545.13</b>	Secondo la classificazione indicata dal fabbricante As per the producer's internal classification Selon la classification mentionnée par le fabricant Laut vom Hersteller angegebener Klassifizierung	<b>GLA-GHA</b>	<b>GLA-GHA</b>
<b>resistenza alla scivolosità</b> non slip grade antiderapant Rutschfestigkeit	<b>DIN51130</b>	<b>Da R9 a R13</b>	<b>R12</b>	-
<b>resistenza alla scivolosità</b> non slip grade antiderapant Rutschfestigkeit	<b>DIN51097</b>	<b>A + B + C</b>	<b>A + B + C</b>	-
<b>coefficient of friction</b> (American Standard)	<b>ASTM C-1028</b>	<b>Dry 0,6</b> <b>Wet 0,6</b>	<b>Dry 0,95</b> <b>Wet 0,71</b>	<b>Dry 0,82</b> <b>Wet 0,51</b>

# pesi e imballi

Weight packing - Poids et emballages - Gewicht Verpackungseinheiten - Массы и упаковки

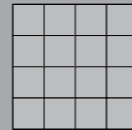
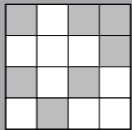
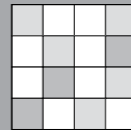
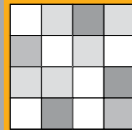
MAT.	DESCRIZIONE	FORMATO	TIPO	PZ			KG		
				PZ	MQ	KG	BOX	MQ	KG
<b>MAT.. 22</b>	<b>Naturale</b>	<b>20x20</b>	<b>MQ</b>	<b>22</b>	<b>0,8800</b>	<b>22,00</b>	<b>68</b>	<b>59,8400</b>	<b>1.515</b>
<b>MAT.. 40</b>	<b>Naturale</b>	<b>20x40</b>	<b>MQ</b>	<b>11</b>	<b>0,8800</b>	<b>18,71</b>	<b>54</b>	<b>47,5200</b>	<b>1.029</b>
<b>MAT.. 60</b>	<b>Naturale</b>	<b>60x60</b>	<b>MQ</b>	<b>3</b>	<b>1,0800</b>	<b>23,71</b>	<b>32</b>	<b>34,5600</b>	<b>778</b>
<b>MAT.. 36</b>	<b>Naturale</b>	<b>30x60</b>	<b>MQ</b>	<b>6</b>	<b>1,0800</b>	<b>23,60</b>	<b>40</b>	<b>43,2000</b>	<b>963</b>
MAT..A BATT40	Battiscopa Naturale	9,5x40	PZ	18	-	15,40	-	-	-
MAT..ELLE30	Elemento Elle Naturale [ * ]	15x30xh5	PZ	6	-	7,64	-	-	-
MAT..A 36STP	Gradino Step Naturale [ * ]	30x60	PZ	6	-	24,00	-	-	-
MAT..SCAM40DX	Scamillo destro Naturale [ 2pz ] [ * ]	9,5x40	PA	2x9	-	15,40	-	-	-
MAT..SCAM40SN	Scamillo sinistro Naturale [ 2pz ] [ * ]	9,5x40	PA	2x9	-	15,40	-	-	-
<b>MAS.. 60</b>	<b>Spazzolato</b>	<b>60x60</b>	<b>MQ</b>	<b>3</b>	<b>1,0800</b>	<b>23,71</b>	<b>32</b>	<b>34,5600</b>	<b>778</b>
<b>MAS.. 36</b>	<b>Spazzolato</b>	<b>30x60</b>	<b>MQ</b>	<b>6</b>	<b>1,0800</b>	<b>23,60</b>	<b>40</b>	<b>43,2000</b>	<b>963</b>
MAS..MOSAICO	Mosaico Spazzolato (su rete)	30x30	MQ	6	-	10,98	-	-	-
MAS..A BATT60	Battiscopa Spazzolato	9,5x60	PZ	10	-	12,15	-	-	-
MAS..A 36STP	Gradino Step Spazzolato [ * ]	30x60	PZ	6	-	24,00	-	-	-
MAS..TOROGF60	Torello con griglia Spazzolato [ * ]	4x60	PZ	4	-	4,00	-	-	-
MAS..SNDXGF60	Angolo Torello con griglia Spazzolato [ 2pz ] [ * ]	4x61	PA	2x1	-	2,00	-	-	-
MAS..SCAM30DX	Scamillo destro Spazzolato [ 2pz ] [ * ]	9,5x30	PA	2x9	-	11,00	-	-	-
MAS..SCAM30SN	Scamillo sinistro Spazzolato [ 2pz ] [ * ]	9,5x30	PA	2x9	-	11,00	-	-	-

[ \* ] **Articoli unicamente a richiesta** - Available only by special order - Articles uniquement sur demande - Nur auf Wunsch gefertigten Artikel - Продукция производится только по заказу

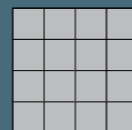
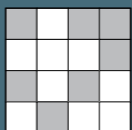
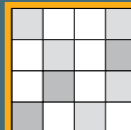
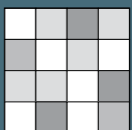
## variazione di stonalizzazione

Shade variation guideline - Effets nuancés possibles - Brandfarben Mischungstabelle - Варианты размывки под каменьприменения

### formato 20x20 - 20x40

	<b>V1</b> <b>Aspetto uniforme</b> Uniform appearance Aspect uniforme Einheitliches Aussehen Однородный внешний вид		<b>V2</b> <b>Lieve variazione</b> Slight variations Légère variation Geringe Abweichung НЕБОЛЬШИЕ ИЗМЕНЕНИЯ		<b>V3</b> <b>Moderata variazione</b> Moderate variations Variation modérée Mässige Abweichung УМЕРЕННЫЕ ИЗМЕНЕНИЯ		<b>V4</b> <b>Forte stonalizzazione</b> Substantial variations Effet dénuancé très accentué Starke Farbabweichung ЗНАЧИТЕЛЬНЫЙ ТИП РАЗМЫВКИ ПОД КАМЕНЬ
---	---	---	--	---	--	---	--

### formato 30x60 - 60x60

	<b>V1</b> <b>Aspetto uniforme</b> Uniform appearance Aspect uniforme Einheitliches Aussehen Однородный внешний вид		<b>V2</b> <b>Lieve variazione</b> Slight variations Légère variation Geringe Abweichung НЕБОЛЬШИЕ ИЗМЕНЕНИЯ		<b>V3</b> <b>Moderata variazione</b> Moderate variations Variation modérée Mässige Abweichung УМЕРЕННЫЕ ИЗМЕНЕНИЯ		<b>V4</b> <b>Forte stonalizzazione</b> Substantial variations Effet dénuancé très accentué Starke Farbabweichung ЗНАЧИТЕЛЬНЫЙ ТИП РАЗМЫВКИ ПОД КАМЕНЬ
---	---	---	--	---	--	---	--



● CEDiR ceramiche si prende cura dell'ambiente che ci circonda, della qualità della vita delle persone e delle risorse del pianeta. Lo fa cercando il continuo miglioramento dei propri processi produttivi e delle prestazioni di prodotto, perché un'azienda che si definisce moderna deve avere come obiettivo certo la massima attenzione alle prestazioni ambientali in ogni fase del ciclo di vita del prodotto. Dal reperimento delle materie prime, alla qualità degli spazi di lavoro, fino agli imballaggi utilizzati, tutto viene analizzato e costantemente ottimizzato per salvaguardare gli utilizzi di energie e materiali, attraverso l'impiego delle migliori tecnologie disponibili.

A dimostrazione dell'impegno aziendale volto alla cura dell'ambiente che ci circonda, CEDiR è socio ordinario di USGBC (U.S. Green Building Council) e GBC Italia (Green Building Council Italia), entrambe associazioni no profit nate per favorire e promuovere lo sviluppo dell'edilizia sostenibile, in accordo con precisi parametri riguardanti la sostenibilità ambientale.

● CEDiR Ceramiche cares for the environment surrounding us, for the quality of life and for the planet's resources. It implements this by seeking ongoing improvement of its own production processes and product performance, because a company that calls itself modern must have as a sure objective the maximum attention to environmental performances in every phase of product life cycle. From finding raw materials to the quality of the workplace, right down to the packing materials used, everything is analysed and constantly optimised to safeguard, through employing the best available technologies, consumption of energy and material.

In demonstration of the company's commitment to environmental care, CEDiR is a regular member of USGBC (U.S. Green Building Council) and GBC Italia (Green Building Council Italia), both non-profit associations set up to favour and promote the development of sustainable building, in accordance with precise parameters concerning environmental sustainability.

● CEDiR Ceramiche prend soin de l'environnement qui nous entoure, de la qualité de la vie des personnes et des ressources de notre planète. Elle le fait en s'efforçant d'améliorer sans cesse ses processus de production et les performances de ses produits, car une société dite moderne doit avoir pour objectif certain de veiller à ce que chaque étape du cycle de vie du produit se déroule dans le souci de maîtriser l'impact de sa production sur l'environnement. De l'approvisionnement en matières premières, à la qualité des espaces de travail en passant par les emballages utilisés, tout est analysé et optimisé en permanence dans l'optique de réduire la consommation d'énergie et de matériaux, par l'application des technologies de pointe aujourd'hui disponibles.

Dans le souci de donner preuve de son engagement à l'égard de l'environnement qui nous entoure, la société CEDiR est devenue membre de l'USGBC (U.S. Green Building Council) et de la GBC Italia (Green Building Council Italia). Il s'agit d'associations à but non lucratif dont l'objectif est de favoriser et d'accélérer la diffusion d'une culture du bâtiment durable, sur la base de paramètres de références précis en matière de durabilité environnementale.

● CEDiR Ceramiche ist auf Umweltschutz, die Lebensqualität der Menschen und den Schutz der natürlichen Ressourcen der Erde bedacht. Aus diesem Grund ist sie um eine kontinuierliche Verbesserung der firmeninternen Fertigungsverfahren und der Produktleistungen bemüht, denn zu den obersten Zielsetzungen eines Unternehmens, das sich selbst als modern bezeichnet, gehört sicherlich großes Augenmerk auf die Umweltleistungen eines Produkts während all seinen Lebensphasen. Von der Gewinnung der Rohstoffe über die Qualität der Arbeitsstätten bis hin zur verwendeten Verpackung werden alle Schritte kontinuierlich untersucht und optimiert, um den Energie- und Materialverbrauch durch den Einsatz fortschrittlicher Technologien einschränken zu können.

Als Beleg der firmenintern geleisteten Umweltschutzbemühungen ist CEDiR ordentliches Mitglied der beiden No-Profit-Vereinigungen USGBC (U.S. Green Building Council) und GBC Italia (Green Building Council Italia), die unter Berücksichtigung präziser Umweltverträglichkeitsparameter eine nachhaltige Entwicklung des Bauwesens fördern und unterstützen.

● КОМПАНИЯ CEDiR CERAMICHE ЗАБОТИТСЯ ОБ ОКРУЖАЮЩЕЙ СРЕДЕ, О КАЧЕСТВЕ ЖИЗНИ ЛЮДЕЙ И СОХРАНЕНИИ РЕСУРСОВ ПЛАНЕТЫ. ЭТО ПРОЯВЛЯЕТСЯ В СТРЕМЛЕНИИ К ПОСТОЯННОМУ УЛУЧШЕНИЮ ПРОИЗВОДСТВЕННЫХ ПРОЦЕССОВ И ЭКСПЛУАТАЦИОННЫХ КАЧЕСТВ КОНЕЧНОГО ПРОДУКТА, Т.К. ЛЮБОЕ ПРЕДПРИЯТИЕ, СЧИТАЮЩЕЕ СЕБЯ ПЕРЕДОВЫМ, ОБЯЗАНО СТАВИТЬ СВОЕЙ ЦЕЛЬЮ СОХРАНЕНИЕ ОКРУЖАЮЩЕЙ СРЕДЫ В КАЖДОЙ ФАЗЕ ПРОИЗВОДСТВА ПРОДУКТА: ОТ ПРИОБРЕТЕНИЯ ПЕРВИЧНОГО СЫРЬЯ ДО ОРГАНИЗАЦИИ РАБОЧИХ МЕСТ, ВПЛОТЬ ДО ПРИМЕНЕНИЯ ПЕРЕРАБОТАННЫХ МАТЕРИАЛОВ ДЛЯ УПАКОВКИ. КАЖДЫЙ ПРОИЗВОДСТВЕННЫЙ ЭТАП АНАЛИЗИРУЕТСЯ И ПОСТОЯННО ОПТИМИЗИРУЕТСЯ ДЛЯ СОХРАНЕНИЯ ЭНЕРГИИ И МАТЕРИАЛОВ, ПОСРЕДСТВОМ ВНЕДРЕНИЯ НАИЛУЧШИХ ПЕРЕДОВЫХ ТЕХНОЛОГИЙ.

В КАЧЕСТВЕ ПОДТВЕРЖДЕНИЯ СЕРЬЕЗНЫХ НАМЕРЕНИЙ НАШЕЙ КОМПАНИИ В ОБЛАСТИ ОХРАНЫ ОКРУЖАЮЩЕЙ СРЕДЫ, ОТМЕТИМ, ЧТО CEDiR ЯВЛЯЕТСЯ ДЕЙСТВИТЕЛЬНЫМ ЧЛЕНОМ USGBC (U.S. GREEN BUILDING COUNCIL) И GBC ITALIA (GREEN BUILDING COUNCIL ITALIA), БЕЗПРИБЫЛЬНЫХ ОБЩЕСТВ СОДЕЙСТВУЮЩИХ И СПОСОБСТВУЮЩИХ РАЗВИТИЮ ЭКОЛОГИЧЕСКОГО СТРОИТЕЛЬСТВА, В СООТВЕТСТВИИ СО СТРОГИМИ ПАРАМЕТРАМИ ЭКОЛОГИЧЕСКОГО РАЗВИТИЯ.

## Contributo all'ottenimento dei crediti LEED

### CONTENUTO % DI MATERIALE RICICLATO credito MR 4.1 (1 punto LEED)

MATERIA è realizzato con l'utilizzo di materiali riciclati pari al 17% (materiale pre-consumo).

### UTILIZZO DI MATERIALI LOCALI, MR Credito 5.2 (2 punti LEED se l'uso di materiali locali incide per almeno il 20% sul totale del valore delle materie prime).

Questi crediti sono applicabili agli edifici costruiti non oltre 800 km dallo stabilimento produttivo della CEDIR CERAMICHE. I paesi che si trovano in questo raggio di territorio sono: Italia, Svizzera, Austria, Belgio, Ungheria, Repubblica Ceca, Slovenia, Croazia, Serbia e la maggior parte della Francia, Germania, Olanda, Slovacchia e Spagna (Catalogna).

Il 37% delle materie prime di MATERIA sono estratte nel raggio di 800 km, quindi MATERIA contribuisce per il 37% del suo valore all'ottenimento dei crediti Leed.

### EFFETTO ISOLA DI CALORE, credito SS 7.1 (1 punto LEED)

MATERIA (colori chiari) non contribuisce ad aumentare la temperatura dell'ambiente dove è installato, riduce l'effetto Isola di Calore, grazie alle sue elevate proprietà fisiche-SRI (Indice di Riflettanza Solare) > 29.

### OTTIMIZZAZIONE DELLA PERFORMANCE ENERGETICA, credito EA 1 (da 1 a 10 punti LEED)

La conducibilità termica (k) di MATERIA è 0,6 ÷ 1.3 (W/m\*k). La bassa conducibilità termica delle piastrelle in gres contribuisce all'ottimizzazione della performance energetica dell'edificio, minimizzando gli impatti ambientali ed economici associati all'uso eccessivo di energia.

### MATERIALI A BASSA EMISSIONE, credito EQ - 4.2 (1 punto LEED)

MATERIA è completamente senza VOC (composto organico volatile). Inoltre, non rilascia VOC durante il suo utilizzo, in qualsiasi condizione d'uso.

## Contribute to LEED certification point

### RECYCLED CONTENT, MR Credit 4.1 (1 LEED point)

MATERIA is manufactured using recycled products. The percentage of these recycled materials is: 17% (PRE-CONSUMER materials).

### REGIONAL MATERIALS, MR Credit 5.2 (2 LEED points are garanted if the use of local raw material is equal to 20% of the total value of the raw materials).

These credits are applicabe for building constructed within 500 miles (804,5 km) from CEDIR CERAMICHE production sites. The Countries within this territorial radius are: Italy, Switzerland, Austria, Belgium, Hungary, Czech Republic, Slovenia, Croatia, Serbia and the major part of France, Germany, Holland, Slovakia and Spain (Catalogne).

37% of MATERIA raw materials are quarried in the 500 miles radius. Therefore MATERIA contributes for 37% of its value to the LEED Credits of this Section.

### HEAT ISLAND EFFECT (Non Roff), SS Credit 7.1 (1 LEED point)

MATERIA (light colors) does not contribute to change the energy balance of the environments where installed. It reduces the Urban Heat Island Effect, thanks to its very good physical properties - SRI (Solar Reflectance Index) > 29. This encourages the external use of this product for both open and covered spaces.

### OPTIMIZE ENERGY PERFORMANCE, EA Credit 1 (1to 10 LEED points)

The thermal conductivity of MATERIA is 0,6 ÷ 1.3 (W/m\*k). As the ceramic tiles are made of material at low thermal conductivity they have got insulating power and therefore could contribute to the energy saving of the building.

### VOC CONTENT, EQ - 4.2 (1 LEED point)

MATERIA is completely without VOC (Volatile organic Compounds). Therefore, won't give off VOC during it use, in any operating conditions.